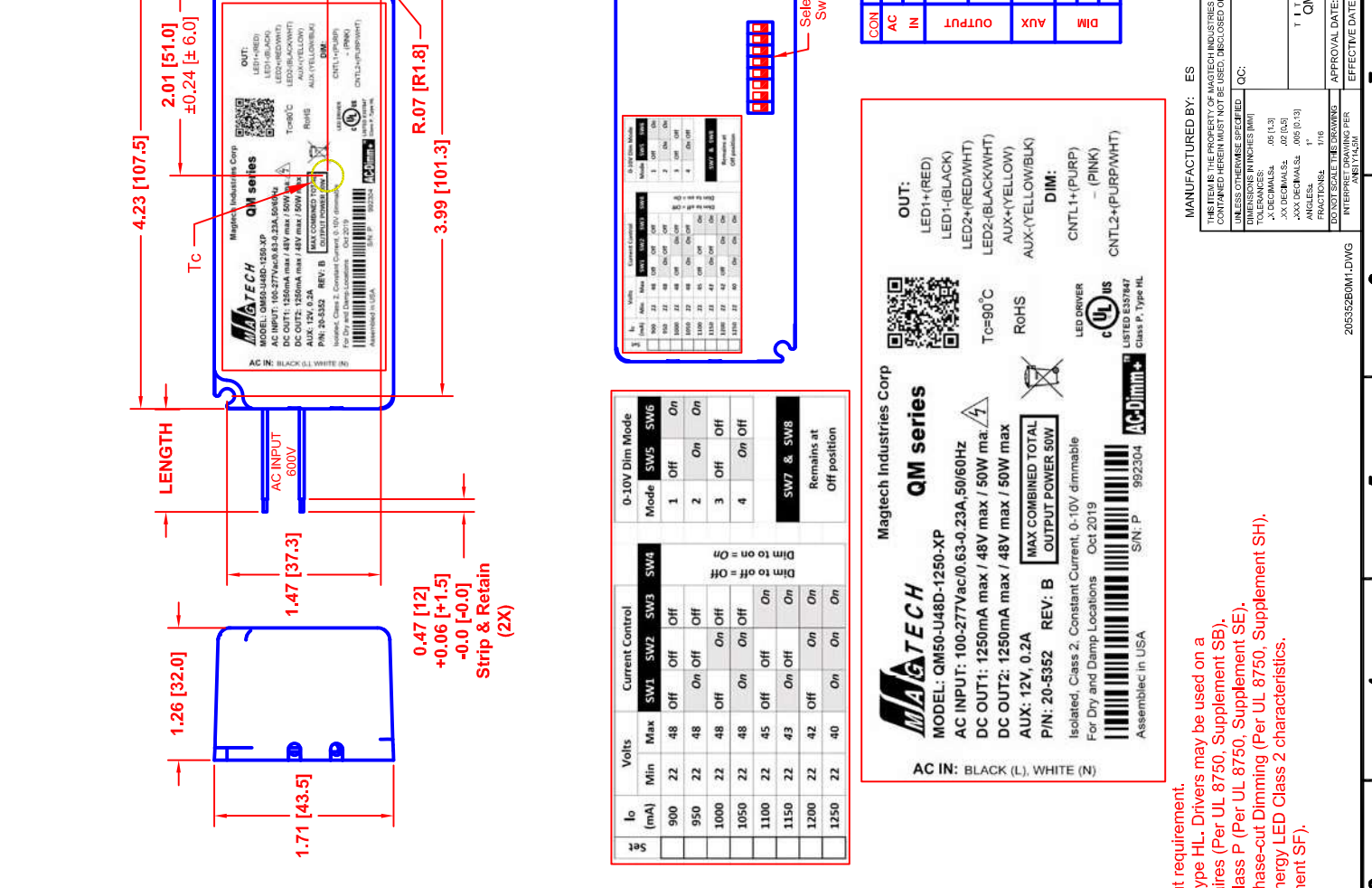


REV	DESCRIPTION	DATE
B0	CHANGED PER ECN 21-001	12/16/2021
A0	RELEASE TO PRODUCTION	1/08/2019



SAFETY	INPUT	OUTPUT	MISCELLANEOUS																								
<p>SAFETY CERTIFICATIONS</p> <ul style="list-style-type: none"> UL cUL E357847 CE LVD pending EMC pending FCC Pending <p>SAFETY STANDARDS COMPLIANCE:</p> <ul style="list-style-type: none"> UL1310 UL1310 LVD EN61347-2-13 EMI STANDARDS: FCC 47 CFR PART 15 CLASS B CE EN55015, EN61547 EN61000-4-2, 3, 4, 5, 6, 8, 11 	<p>THD < 20%</p> <p>POWER FACTOR: 0.97</p> <p>LEAKAGE CURRENT: < 0.01mA @ 277VAC</p> <p>Surge Immunity: 2.5k Vac</p> <p>INPUT RANGE: 100-277 VAC, 0.5-0.18A @ FULL LOAD.</p> <p>FREQUENCY: 50/60 Hz.</p> <p>EFFICIENCY: 87 % Typ.</p> <p>PEAK INRUSH (NEMA 410): I_p=0.00192 A sec @ 110VAC</p> <p>I_p=0.0073 A sec @ 277VAC</p>	<p>MAX LOAD REG MAX RIP</p> <table border="1"> <thead> <tr> <th>OUT TYPE</th> <th>OUTPUT</th> <th>MIN</th> <th>MAX</th> <th>LOAD REG</th> <th>MAX RIP</th> </tr> </thead> <tbody> <tr> <td>#1 CC</td> <td>1250mA</td> <td>22V</td> <td>48V</td> <td>±5%</td> <td>10%</td> </tr> <tr> <td>#2 CC</td> <td>1250mA</td> <td>22V</td> <td>48V</td> <td>±5%</td> <td>10%</td> </tr> <tr> <td>#3 CV</td> <td>12V</td> <td>0A</td> <td>0.2A</td> <td>N/A</td> <td>N/A</td> </tr> </tbody> </table> <p>Note for CC output: Actual output current depends on the selector switch</p>	OUT TYPE	OUTPUT	MIN	MAX	LOAD REG	MAX RIP	#1 CC	1250mA	22V	48V	±5%	10%	#2 CC	1250mA	22V	48V	±5%	10%	#3 CV	12V	0A	0.2A	N/A	N/A	<p>PROTECTION:</p> <ul style="list-style-type: none"> SCP-OLP-OVP AUTO-RECOVERY <p>NOISE LEVEL: N/A</p> <p>RELIABILITY (MTBF): 100,000 HRS. @ 25 DEG. C @ FULL LOAD</p> <p>ENVIRONMENTAL CONDITIONS:</p> <ul style="list-style-type: none"> LOWEST OPERATING TEMPERATURE: -40°C RELATIVE HUMIDITY: 5 ~ 95% LOCATION: For Dry and Damp Use Only <p>CONNECTOR: N/A</p>
OUT TYPE	OUTPUT	MIN	MAX	LOAD REG	MAX RIP																						
#1 CC	1250mA	22V	48V	±5%	10%																						
#2 CC	1250mA	22V	48V	±5%	10%																						
#3 CV	12V	0A	0.2A	N/A	N/A																						

PF, THD AND EFFICIENCY CALCULATIONS ARE BASED ON THE LOADING OF THE DRIVER TO MINIMUM 65% AND MAXIMUM 100% OF 50W

0-10V Dim Mode	SW1	SW2	SW3	SW4	SW5	SW6
Mode 1	Off	Off	Off	On	On	On
Mode 2	On	Off	Off	On	On	On
Mode 3	Off	On	Off	On	Off	On
Mode 4	On	On	Off	On	Off	On

Dim to on = On
Dim to off = Off

SW7 & SW8 Remains at Off position

Volts	Min	Max	SW1	SW2	SW3	SW4	SW5	SW6
900	22	48	Off	Off	Off	On	On	On
950	22	48	On	Off	Off	On	On	On
1000	22	48	Off	On	Off	On	Off	On
1050	22	48	On	On	Off	On	Off	On
1100	22	45	Off	Off	Off	On	On	On
1150	22	43	On	Off	Off	On	On	On
1200	22	42	Off	Off	Off	On	On	On
1250	22	40	On	On	Off	On	On	On

Magtech Industries Corp
QM series
MODEL: QM50-U48D-1250-XP
AC INPUT: 100-277VAC/0.63-0.23A, 50/60Hz
DC OUT1: 1250mA max / 48V max / 50W max
DC OUT2: 1250mA max / 48V max / 50W max
AUX: 12V, 0.2A
P/N: 20-5352 REV: B
Isolated, Class 2, Constant Current, 0-10V dimmable
For Dry and Damp Locations Oct. 2019
Assembled in USA S/N: P 992304

AC IN: BLACK (L), WHITE (N)

OUT:
LED1+(RED)
LED1-(BLACK)
LED2+(RED/WHIT)
LED2-(BLACK/WHIT)
AUX1+(YELLOW)
AUX1-(YELLOW/BLK)

DIM:
CNTL1+(PURP)
- (PINK)
CNTL2+(PURP/WHIT)

LED DRIVER
cULus LISTED E537847 Class P, Type HL
AC-Dimm+
S/N: P 992304

0-10V Dim Mode

Mode	SW5	SW6
1	Off	On
2	On	On
3	Off	Off
4	On	Off

MAX COMBINED TOTAL OUTPUT POWER 50W

QR CODE

RoHS

MANUFACTURED BY: ES

Magtech Industries Corp
QM series
MODEL: QM50-U48D-1250-XP
AC INPUT: 100-277VAC/0.63-0.23A, 50/60Hz
DC OUT1: 1250mA max / 48V max / 50W max
DC OUT2: 1250mA max / 48V max / 50W max
AUX: 12V, 0.2A
P/N: 20-5352 REV: B
Isolated, Class 2, Constant Current, 0-10V dimmable
For Dry and Damp Locations Oct. 2019
Assembled in USA S/N: P 992304

AC IN: BLACK (L), WHITE (N)

OUT:
LED1+(RED)
LED1-(BLACK)
LED2+(RED/WHIT)
LED2-(BLACK/WHIT)
AUX1+(YELLOW)
AUX1-(YELLOW/BLK)

DIM:
CNTL1+(PURP)
- (PINK)
CNTL2+(PURP/WHIT)

LED DRIVER
cULus LISTED E537847 Class P, Type HL
AC-Dimm+
S/N: P 992304

0-10V Dim Mode

Mode	SW5	SW6
1	Off	On
2	On	On
3	Off	Off
4	On	Off

MAX COMBINED TOTAL OUTPUT POWER 50W

QR CODE

RoHS

MANUFACTURED BY: ES

CON	PIN	COLOR	OUTPUT	AVG	LENGTH
AC	--	BLACK	LINE 18		
IN	--	WHITE	NEUTRA 18		
LED1	1	RED	+	20	
LED2	2	BLACK	-	20	
AUX	3	BLK/WHIT	+	20	6.5 [165]
12V	4	RED/WHIT	+	20	±0.5 [±13]
AUX	5	YELLOW	+	20	
12V	6	YLLW/BLK	+	20	
CNTL1+	7	PURPLE	-	22	
Dim+	8	PINK	-	22	
CNTL2+	9	PURP/WHIT	+	22	

Notes:

- 5 yrs warr provided Tc point remains below 80°C
- Low flickering – Less than 10% up to 120Hz
- Dimming: 0-10V Dimming, driver will dim to off.
- 4 in 1 dimming – TRIAC / ELV / 0-10V / PWM
- These LED drivers are suitable for factory wiring only.
- These LED drivers shall be enclosed on the end product.
- These LED drivers have been evaluated to Class 2 output requirement.
- These LED drivers meet the requirements identified as Type HL. Drivers may be used on a Class I, Division 2 hazardous (Classified) location luminaires (Per UL 8750, Supplement SB).
- These LED drivers meet the requirements identified as Class P (Per UL 8750, Supplement SE).
- These LED drivers meet the requirements identified as Phase-cut Dimming (Per UL 8750, Supplement SH).
- These LED drivers complies with Low-Voltage Limited-Energy LED Class 2 characteristics.
- Wired control circuits are isolated (Per UL 8750, Supplement SF).

MANUFACTURED BY: ES

THIS ITEM IS THE PROPERTY OF MAGTECH INDUSTRIES AND CONTAINS PROPRIETARY, CONFIDENTIAL AND TRADE SECRET INFORMATION. THE INFORMATION CONTAINED HEREIN IS NOT TO BE USED, REPRODUCED OR TRANSMITTED IN ANY FORM OR BY ANY MEANS WITHOUT PRIOR WRITTEN CONSENT FROM MAGTECH.

UNLESS OTHERWISE SPECIFIED:
DIMENSIONS IN INCHES (MM)
TOLERANCES: .05 (.013)
XX DECIMALS .02 (.013)
XXX DECIMALS .005 (.013)
FRACTIONS 1/16
DO NOT SCALE THE DRAWING
INTERPRET DRAWING PER ANSI Y14.3M

205532B0M1.DWG

APPROVAL DATE: 08/26/2020

EFFECTIVE DATE: 1/08/2019

MODEL NO: QM50-U48D-1250-XP

REV: B0

FORM PF-004

MAGTECH