

**JUNO**<sup>®</sup>**TRAC-MASTER**<sup>®</sup>

Avant Garde

**16W CONIX<sup>®</sup> II LED**  
**T262L**

Project: \_\_\_\_\_

Fixture Type: \_\_\_\_\_

Location: \_\_\_\_\_

Contact/Phone: \_\_\_\_\_

**PRODUCT DESCRIPTION**

The sleek sculpted aesthetic of the Conix II LED fixtures is unparalleled in the industry. Their elegance is carried through the entire design for a fresh, contemporary appeal. The 16W Conix II LED fixtures have integral reflectors which enable uniform spot, flood or narrow flood distributions to be achieved. These lampholders have an integral, bayonet-mounted accessory holder that accommodates up to two accessories if desired in place of the clear glass lens provided. The 16W Conix II LED can deliver up to 1675 lumens, utilizing less than 1/3 of the energy of halogen equivalents and having a rated life of 50,000 hours. Available in 2700K, 3000K, 3500K and 4000K color temperatures, the white-light 16W Conix II LED is compatible with all Juno line voltage track and standard adapter accessories.

**PRODUCT SPECIFICATIONS**

**Construction** All-metal housing and custom designed concealed heat sink provides outstanding thermal management, yielding 70% average lumen maintenance at 50,000 hours of operation • Passively-cooled design – no moving parts to break or wear-out • Extruded aluminum vertically mounted LED driver housing • Concealed fixture wiring for a clean aesthetic • Fashionable, elegant design complements any decor • Available in white, black and silver painted finishes.

**LED** High performance LED array provides outstanding reliability, performance and color quality/consistency • 2700K, 3000K, 3500K or 4000K white phosphor high performance LEDs • Chromaticity range within a 3-step MacAdam Ellipse • 80 CRI minimum on standard product • Optional high CRI versions offer 90 CRI or 97 CRI minimum.

**Driver** Assembled in a side-mount vertical housing to minimize overall fixture footprint • Insulating air gap between driver and LED light engine optimizes thermal operation • Provides quiet operation with or without dimming • 120V fixtures are dimmable using high quality reverse phase ELV dimmers approved by Juno – see [D1.3.39G2-DIM](#) • Solid state electronic, Class 2 compliant • Integral overcurrent and short circuit protection • Class B FCC Part 15 rated.

**Reflector** Precision designed custom reflector provides either spot, narrow flood or flood beam distributions • Faceted/dimpled reflector ensures a properly color-mixed beam • Accessory reflectors available to convert from one beam distribution to another in the field.

**Juno Universal Track Adapter** Universally compatible with both Trac-Master 1-circuit or 2-circuit track, Trac-Lites track, monopoints and special mountings • Also UL Recognized for use on ConTech® LT Series track • Copper alloy contacts provide precise spring action – no arcing and will not take a set • True, positive electrical ground • On /off switch included • Patented embossed polarity arrows on bottom of adapter • Spring-loaded positive latch with embossed polarity arrows secures track light to track • Two-position power contact provided for two-circuit application.

**Alternate TEK/HTEK Track Adapter** Compatible with either Juno TEK or HTEK track systems • System specific and assembled to track fixture • Integrally polarized construction to prevent reverse installation – only allows insertion in proper orientation • Rotary circuit selector enables simple switching between circuits • Integral on/off switch enables individual fixtures to be switched for servicing.

**Alternate GTYPE Track Adapter** Compatible with track systems based on GES type track, including Lithonia LT Commercial Track (not LTS type) • System specific and assembled to track fixture • Consult factory for additional information.

**Alternate HTYPE Track Adapter** Compatible with track systems which use a H-type track adapter, including Lithonia LTS Decorative Track (not LT type) • System specific and assembled to track fixture • Two-position power contact provided for two-circuit application • Consult factory for additional information.

**Alternate LTYPE Track Adapter** Compatible with track systems which use a L-type track adapter • System specific and assembled to track fixture • Two-position power contact provided for two-circuit application • Consult factory for additional information.

**Accessory Holder** Integral to fixture design • Die cast aluminum construction • Precision bayonet mounting • Accommodates up to two accessories if desired.

**Aiming** 360° horizontal coverage • Greater than 90° vertical aiming capability.

**Labels** UL and C-UL Listed • Union made • Assembled in U.S.A. • DesignLights Consortium<sup>®</sup> qualified where noted in Performance Data.

**Government Procurement**

**BAA – Buy America(n) Act:** Product qualifies as a domestic end product under the Buy American Act as implemented in the FAR and DFARS. Product also qualifies as manufactured in the United States under DOT Buy America regulations.

**BABA – Build America Buy America:** Product qualifies as produced in the United States under the definitions of the Build America, Buy America Act.

Please refer to [www.acuitybrands.com/buy-american](http://www.acuitybrands.com/buy-american) for additional information.

**Warranty** 5-year limited warranty. This is the only warranty provided and no other statements in this specification sheet create any warranty of any kind. All other express and implied warranties are disclaimed. Complete warranty terms located at: [www.acuitybrands.com/support/warranty/terms-and-conditions](http://www.acuitybrands.com/support/warranty/terms-and-conditions)

**Note:** Actual performance may differ as a result of end-user environment and application.

All values are design or typical values, measured under laboratory conditions at 25 °C.

Specifications subject to change without notice.

ConTech is a registered trademark of ConTech Lighting.



# TRAC-MASTER®

Avant Garde

## 16W CONIX® II LED

### T262L

#### ORDERING INFORMATION

Ordering Example: T262L G2 30K 80CRI PDIM SP WH, T262L TEK G2 30K 80CRI PDIM SP BL

Series	Mounting Adapter Type	Generation	Color Temperature	Color Rendering Index	Dimming Compatibility	Distribution	Finish
T262L 16W Conix II LED	<b>(Blank)</b> Universal 120V Track Adapter	G2 Generation 2	<b>27K</b> 2700K	<b>80CRI</b> 80 CRI <b>90CRI</b> 90 CRI <b>97CRI<sup>2</sup></b> 97 CRI	<b>OFF<sup>1</sup></b> On/Off (Non-Dimming) <b>PDIM</b> Phase Dimmable	<b>SP</b> Spot <b>NFL</b> Narrow Flood <b>FL</b> Flood	<b>BL</b> Black <b>SL</b> Silver <b>WH</b> White
	<b>HTEK<sup>1</sup></b> HTEK 277V Track Adapter		<b>30K</b> 3000K				
	<b>TEK</b> TEK 120V Track Adapter		<b>35K</b> 3500K				
	<b>GTYPE</b> G-Type Track Adapter		<b>40K</b> 4000K				
	<b>HTYPE</b> H-Type Track Adapter						
	<b>LTYPE</b> L-Type Track Adapter						
	See page 5 for Direct Canopy Mount Option (CPY) specifications.						

Accessories (Order Separately)			
<b>HCLBL 375</b>	Hexcell Louver - Black	<b>UVF 375</b>	UV Filter
<b>CCLBL 375</b>	Cube Cell Louver - Black	<b>DIFF 375</b>	Diffusion Glass Lens
<b>SNOOTBL 375</b>	Snoot - Black	<b>SOLITE 375</b>	Uniformity Lens
<b>TBDR BLCK 375</b>	Barn Doors - Black	<b>PRISM 375</b>	Prismatic Spread Lens
<b>CGF 375</b>	Color Glass Filters	<b>LSPREAD 375</b>	Linear Spread Lens
<b>DGF 375</b>	Dichroic Glass Filter	<b>T40N<sup>3</sup></b>	Monopoint Canopy
		<b>TR3 FLD</b>	Reflector – Flood
		<b>TR3 NFLD</b>	Reflector – Narrow Flood
		<b>TR3 SPT</b>	Reflector – Spot

See specification sheet [D1.2.2](#) for details.

Other accessories can be found on specification sheet [D1.2.0](#).

Notes:

- HTEK versions available with OFF option only, and OFF option available with HTEK only. HTEK mounting not DesignLights Consortium® qualified.
- 2700K, 3000K and 4000K only.
- Add finish code to complete catalog number (Example: T40N WH).

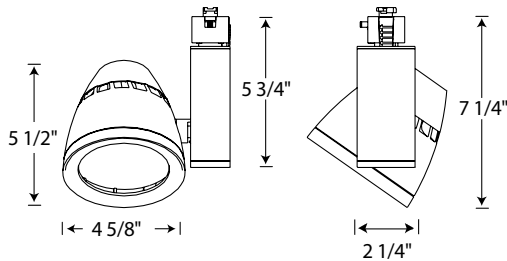
# TRAC-MASTER®

Avant Garde

## 16W CONIX® II LED

### T262L

#### DIMENSIONS



#### ELECTRICAL DATA

Input Voltage	120V	277V
Input Current (max.)	0.15A	0.07A
Power Factor	>0.99	>0.96
T.H.D	<10%	<20%

#### PERFORMANCE DATA<sup>1,2</sup>

Catalog Number	Input Voltage	Input Watts (Typical)	Lumens	Efficacy (LPW)	Rated Life (Hours)	DLC Listed
T262L G2 27K 80CRI SP	120V	15.9	1561	98	50,000	x
T262L G2 27K 80CRI NFL	120V	15.9	1555	98	50,000	x
T262L G2 27K 80CRI FL	120V	15.9	1554	98	50,000	x
T262L G2 27K 90CRI SP	120V	15.9	1285	81	50,000	
T262L G2 27K 90CRI NFL	120V	15.9	1280	80	50,000	
T262L G2 27K 90CRI FL	120V	15.9	1279	80	50,000	
T262L G2 27K 97CRI SP	120V	15.9	1171	74	50,000	
T262L G2 27K 97CRI NFL	120V	15.9	1166	73	50,000	
T262L G2 27K 97CRI FL	120V	15.9	1166	73	50,000	
T262L G2 30K 80CRI SP	120V	15.9	1626	102	50,000	x
T262L G2 30K 80CRI NFL	120V	15.9	1620	102	50,000	x
T262L G2 30K 80CRI FL	120V	15.9	1619	102	50,000	x
T262L G2 30K 90CRI SP	120V	15.9	1350	85	50,000	x
T262L G2 30K 90CRI NFL	120V	15.9	1345	85	50,000	x
T262L G2 30K 90CRI FL	120V	15.9	1344	85	50,000	
T262L G2 30K 97CRI SP	120V	15.9	1220	77	50,000	
T262L G2 30K 97CRI NFL	120V	15.9	1215	76	50,000	
T262L G2 30K 97CRI FL	120V	15.9	1214	76	50,000	
T262L G2 35K 80CRI SP	120V	15.9	1659	104	50,000	x
T262L G2 35K 80CRI NFL	120V	15.9	1652	104	50,000	x
T262L G2 35K 80CRI FL	120V	15.9	1651	104	50,000	x
T262L G2 35K 90CRI SP	120V	15.9	1366	86	50,000	x
T262L G2 35K 90CRI NFL	120V	15.9	1361	86	50,000	x
T262L G2 35K 90CRI FL	120V	15.9	1360	86	50,000	x
T262L G2 40K 80CRI SP	120V	15.9	1675	105	50,000	x
T262L G2 40K 80CRI NFL	120V	15.9	1669	105	50,000	x
T262L G2 40K 80CRI FL	120V	15.9	1668	105	50,000	x
T262L G2 40K 90CRI SP	120V	15.9	1382	87	50,000	x
T262L G2 40K 90CRI NFL	120V	15.9	1377	87	50,000	x
T262L G2 40K 90CRI FL	120V	15.9	1376	87	50,000	x
T262L G2 40K 97CRI SP	120V	15.9	1268	80	50,000	
T262L G2 40K 97CRI NFL	120V	15.9	1264	79	50,000	
T262L G2 40K 97CRI FL	120V	15.9	1263	79	50,000	

<sup>1</sup> Performance data, including Rated Life, is based on measurements of an individual fixture operating at 120V in a 25°C ambient.

<sup>2</sup> HTEK mounting not DLC qualified.

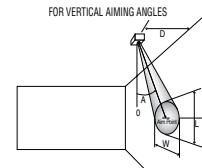
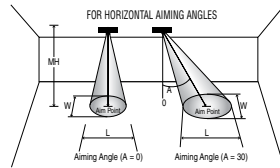
# TRAC-MASTER®

Avant Garde  
**16W CONIX® II LED**  
**T262L**

## PHOTOMETRICS

**CBCP** • Centerbeam candlepower  
**FC** • Footcandles at beam center (aim point)

In vertical aiming applications, aim point (X) is determined by dividing distance from the wall (D) by the tangent of the desired aim angle (A) (0.5774 for 30°, 1.0 for 45°, 1.732 for 60°).



Fixture	Beam Type	Beam Spread	Rated Life	CBCP	0°		30°			30°			45°				60°								
					MH	FC	L	W	FC	L	W	D	FC	X	L	W	FC	X	L	W	D	FC	X	L	W
Conix II 16W LED 30K, 80CRI Spot	S	14°	50000	15697	12	109	3.0	3.0	71	4.0	3.5	4	123	6.9	4.2	2.0	347	4.0	2.0	1.4	10	102	5.8	3.4	2.9
					14	80	3.5	3.5	52	4.7	4.1	5	78	8.7	5.3	2.5	222	5.0	2.5	1.8	11	84	6.4	3.7	3.2
					16	61	4.0	4.0	40	5.4	4.6	6	55	10.4	6.3	3.0	154	6.0	3.1	2.1	12	71	6.9	4.0	3.5
					18	48	4.5	4.5	31	6.1	5.2	7	40	12.1	7.4	3.5	113	7.0	3.6	2.5	13	60	7.5	4.4	3.8
					20	39	5.0	5.0	25	6.7	5.8	8	31	13.9	8.4	4.0	87	8.0	4.1	2.8	14	52	8.1	4.7	4.1
Conix II 16W LED 30K, 80CRI Narrow Flood	N	26°	50000	7185	7	147	3.2	3.2	95	4.4	3.7	3	100	5.2	6.5	2.7	282	3.0	2.9	1.9	6	130	3.5	3.7	3.2
					8	112	3.7	3.7	73	5.0	4.2	4	56	6.9	8.7	3.7	159	4.0	3.9	2.6	8	73	4.6	5.0	4.2
					9	89	4.1	4.1	58	5.6	4.8	5	36	8.7	10.9	4.6	102	5.0	4.8	3.2	10	47	5.8	6.2	5.3
					10	72	4.6	4.6	47	6.2	5.3	6	25	10.4	13.0	5.5	71	6.0	5.8	3.9	12	32	6.9	7.5	6.3
					11	59	5.0	5.0	39	6.8	5.8	7	18	12.1	15.2	6.4	52	7.0	6.8	4.5	14	24	8.1	8.7	7.4
Conix II 16W LED 30K, 80CRI Flood	F	36°	50000	4088	5	164	3.2	3.2	106	4.5	3.8	2	128	3.5	7.6	2.6	361	2.0	2.9	1.8	4	166	2.3	3.6	3.0
					6	114	3.9	3.9	74	5.4	4.5	3	57	5.2	11.4	3.9	161	3.0	4.4	2.8	5	106	2.9	4.5	3.8
					7	83	4.5	4.5	54	6.3	5.3	4	32	6.9	15.2	5.2	90	4.0	5.8	3.7	6	74	3.5	5.4	4.5
					8	64	5.2	5.2	41	7.2	6.0	5	20	8.7	19.0	6.5	58	5.0	7.3	4.6	7	54	4.0	6.3	5.3
					9	50	5.8	5.8	33	8.1	6.8	6	14	10.4	22.8	7.8	40	6.0	8.7	5.5	8	41	4.6	7.2	6.0

CRI/CCT Multiplier		
CRI	CCT	Multiplier
80	27K	0.96
	30K	1.00
	35K	1.02
	40K	1.03
90	27K	0.79
	30K	0.83
	35K	0.84
	40K	0.85
97	27K	0.72
	30K	0.75
	40K	0.78

**JUNO****TRAC-MASTER®**

Avant Garde

**16W CONIX® II LED****T262L**

Project: \_\_\_\_\_

Fixture Type: \_\_\_\_\_

Location: \_\_\_\_\_

Contact/Phone: \_\_\_\_\_

**DIRECT CANOPY MOUNT****PRODUCT DESCRIPTION**

The sleek sculpted aesthetic of the Conix II LED fixtures is unparalleled in the industry. Their elegance is carried through the entire design for a fresh, contemporary appeal. The 16W Conix II LED fixtures have integral reflectors which enable uniform spot, flood or narrow flood distributions to be achieved. These lampholders have an integral, bayonet-mounted accessory holder that accommodates up to two accessories if desired in place of the clear glass lens provided. The 16W Conix II LED can deliver up to 1675 lumens, utilizing less than 1/3 of the energy of halogen equivalents and having a rated life of 50,000 hours. The Canopy Mount version is designed to mount over a standard j-box and is available with a variety of performance options including 277V operation, 347V operation, phase-dimming, and 0-10V dimming.

**PRODUCT SPECIFICATIONS**

**Construction** All-metal housing and custom designed concealed heat sink provides outstanding thermal management, yielding 70% average lumen maintenance at 50,000 hours of operation • Passively-cooled design – no moving parts to break or wear-out • Extruded aluminum vertically mounted LED driver housing • Concealed fixture wiring for a clean aesthetic • Fashionable, elegant design complements any decor • Available in white or black painted finishes.

**LED** High performance LED array provides outstanding reliability, performance and color quality/consistency • 2700K, 3000K, 3500K or 4000K white phosphor high performance LEDs • Chromaticity range within a 3-step MacAdam Ellipse • 80 CRI minimum on standard product • Optional high CRI versions offer 90 CRI or 97 CRI minimum.

**Electrical/Driver** Multi-volt (120-277V, 50/60Hz) phase-dimmable or 0-10V dimmable driver mounted in a vertical driver housing and assembled to a slim canopy • Optional 347V 0-10V dimmable driver mounted in a deep canopy • 0-10V dimming requires two (2) additional low-voltage wires to be pulled.

**Dimming** MVOLT versions are phase-dimmable (120V only) down to 10% or less using high quality, factory-approved dimmers - see [D1.3.39G2-DIM](#) • MVOLT versions are also 0-10V dimmable down to as low as 1% and require two (2) additional low-voltage wires to be pulled • 347V versions are 0-10V dimmable down to as low as 1% and require two (2) additional low-voltage wires to be pulled.

**Reflector** Precision designed custom reflector provides either spot, narrow flood or flood beam distributions • Faceted/dimpled reflector ensures a properly color-mixed beam • Accessory reflectors available to convert from one beam distribution to another in the field.

**Mounting** Installs over a standard electrical j-box • Accent light is permanently, factory-assembled to the mounting canopy • Universal mounting plate accommodates octagon box and typical j-box mud rings • Mounting plate designed to be installed snug to mounting surface • May be ceiling or wall mounted in any orientation • Driver is assembled into vertical driver housing for MVOLT versions or into deep mounting canopy for 347V versions – see Dimensions section for canopy type and dimensions based on option selected • Canopy is securely tethered to mounting plate to facilitate wiring terminations.

**Accessory Holder** Integral to fixture design • Die cast aluminum construction • Precision bayonet mounting • Accommodates up to two accessories if desired.

**Aiming** 360° horizontal coverage • Greater than 180° vertical aiming capability.

**Labels** UL and C-UL Damp Location Listed • Union made • Assembled in U.S.A.

**Government Procurement**

BAA – Buy America(n) Act: Product qualifies as a domestic end product under the Buy American Act as implemented in the FAR and DFARS. Product also qualifies as manufactured in the United States under DOT Buy America regulations.

BABA – Build America Buy America: Product qualifies as produced in the United States under the definitions of the Build America, Buy America Act.

Please refer to [www.acuitybrands.com/buy-american](http://www.acuitybrands.com/buy-american) for additional information.

**Warranty** 5-year limited warranty. This is the only warranty provided and no other statements in this specification sheet create any warranty of any kind. All other express and implied warranties are disclaimed. Complete warranty terms located at: [www.acuitybrands.com/support/warranty/terms-and-conditions](http://www.acuitybrands.com/support/warranty/terms-and-conditions)

**Note:** Actual performance may differ as a result of end-user environment and application. All values are design or typical values, measured under laboratory conditions at 25 °C. Specifications subject to change without notice.

# TRAC-MASTER®

Avant Garde

## 16W CONIX® II LED

T262L

### DIRECT CANOPY MOUNT

#### ORDERING INFORMATION

Ordering Example: T262L CPY G2 30K 80CRI MVOLT NFL BL

Series	Mounting Adapter Type	Generation	Color Temperature	Color Rendering Index	Input Voltage <sup>2</sup>
T262L 16W Conix II LED	CPY Canopy Mounting	G2 Generation 2	27K 2700K 30K 3000K 35K 3500K 40K 4000K	80CRI 80 CRI 90CRI 90 CRI 97CRI <sup>1</sup> 97 CRI	MVOLT 120V/277V Operation 347 347V Operation

Distribution	Finish
SP Spot NFL Narrow Flood FL Flood	BL Black WH White

Accessories (Order Separately)		
HCLBL 375	Hexcell Louver - Black	UVF 375 UV Filter
CCLBL 375	Cube Cell Louver - Black	DIFF 375 Diffusion Glass Lens
SNOOTBL 375	Snoot - Black	SOLITE 375 Uniformity Lens
TBDR BLCK 375	Barn Doors - Black	PRISM 375 Prismatic Spread Lens
CGF 375	Color Glass Filters	LSPREAD 375 Linear Spread Lens
DGF 375	Dichroic Glass Filter	TR3 FLD Reflector - Flood
		TR3 NFLD Reflector - Narrow Flood
		TR3 SPT Reflector - Spot

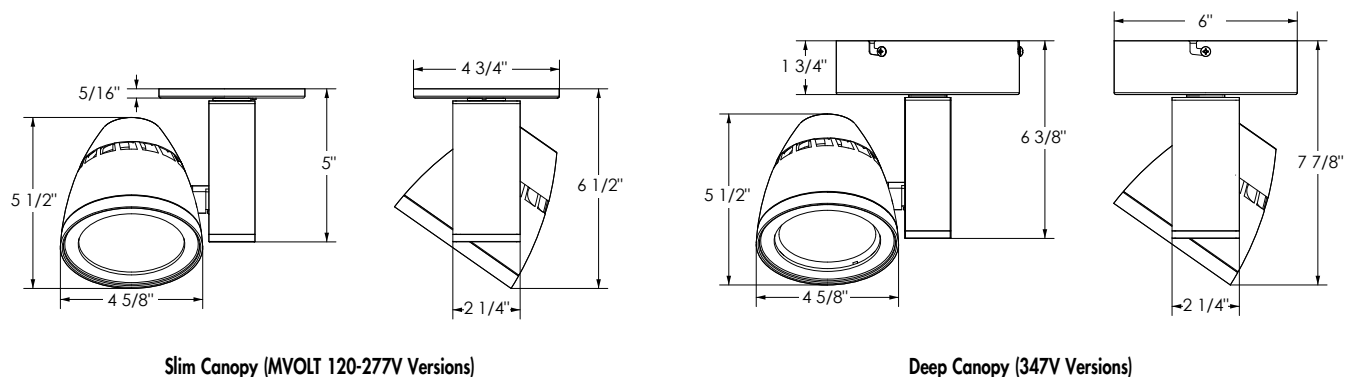
See specification sheet [D1.2.2](#) for details.

Other accessories can be found on specification sheet [D1.2.0](#).

Notes:

- 1 2700K, 3000K and 4000K only.
- 2 MVOLT option can be either phase-dimmed (120V) or 0-10V dimmed; 347V option is 0-10V dimming only.

#### DIMENSIONS



# TRAC-MASTER®

Avant Garde

## 16W CONIX® II LED

### T262L

### DIRECT CANOPY MOUNT

#### ELECTRICAL DATA

Input Voltage	120V	277V	347V
Input Wattage (typ.)	16.2	16.6	17.5
Input Current (max.)	0.15A	0.07A	0.07A
Power Factor	>0.99	>0.96	>0.84
T.H.D.	<10%	<20%	<30%

#### PERFORMANCE DATA<sup>1</sup>

Catalog Number	Input Voltage	Input Watts (Typical)	Lumens	Efficacy (LPW)	Rated Life (Hours)
T262L G2 27K 80CRI SP	120V	16.1	1561	98	50,000
T262L G2 27K 80CRI NFL	120V	16.1	1555	98	50,000
T262L G2 27K 80CRI FL	120V	16.1	1554	98	50,000
T262L G2 27K 90CRI SP	120V	16.1	1285	81	50,000
T262L G2 27K 90CRI NFL	120V	16.1	1280	80	50,000
T262L G2 27K 90CRI FL	120V	16.1	1279	80	50,000
T262L G2 27K 97CRI SP	120V	16.1	1171	74	50,000
T262L G2 27K 97CRI NFL	120V	16.1	1166	73	50,000
T262L G2 27K 97CRI FL	120V	16.1	1166	73	50,000
T262L G2 30K 80CRI SP	120V	16.1	1626	102	50,000
T262L G2 30K 80CRI NFL	120V	16.1	1620	102	50,000
T262L G2 30K 80CRI FL	120V	16.1	1619	102	50,000
T262L G2 30K 90CRI SP	120V	16.1	1350	85	50,000
T262L G2 30K 90CRI NFL	120V	16.1	1345	85	50,000
T262L G2 30K 90CRI FL	120V	16.1	1344	85	50,000
T262L G2 30K 97CRI SP	120V	16.1	1220	77	50,000
T262L G2 30K 97CRI NFL	120V	16.1	1215	76	50,000
T262L G2 30K 97CRI FL	120V	16.1	1214	76	50,000
T262L G2 35K 80CRI SP	120V	16.1	1659	104	50,000
T262L G2 35K 80CRI NFL	120V	16.1	1652	104	50,000
T262L G2 35K 80CRI FL	120V	16.1	1651	104	50,000
T262L G2 35K 90CRI SP	120V	16.1	1366	86	50,000
T262L G2 35K 90CRI NFL	120V	16.1	1361	86	50,000
T262L G2 35K 90CRI FL	120V	16.1	1360	86	50,000
T262L G2 40K 80CRI SP	120V	16.1	1675	105	50,000
T262L G2 40K 80CRI NFL	120V	16.1	1669	105	50,000
T262L G2 40K 80CRI FL	120V	16.1	1668	105	50,000
T262L G2 40K 90CRI SP	120V	16.1	1382	87	50,000
T262L G2 40K 90CRI NFL	120V	16.1	1377	87	50,000
T262L G2 40K 90CRI FL	120V	16.1	1376	87	50,000
T262L G2 40K 97CRI SP	120V	16.1	1268	80	50,000
T262L G2 40K 97CRI NFL	120V	16.1	1264	79	50,000
T262L G2 40K 97CRI FL	120V	16.1	1263	79	50,000

<sup>1</sup>Performance data, including Rated Life, is based on measurements of an individual fixture operating at 120V in a 25°C ambient.

# TRAC-MASTER®

Avant Garde

## 16W CONIX® II LED

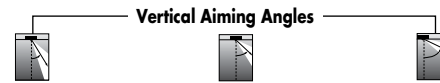
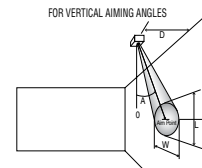
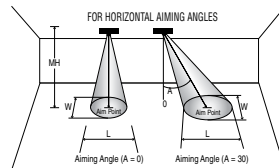
### T262L

## DIRECT CANOPY MOUNT

### PHOTOMETRICS

**CBCP** • Centerbeam candlepower  
**FC** • Footcandles at beam center (aim point)

In vertical aiming applications, aim point (X) is determined by dividing distance from the wall (D) by the tangent of the desired aim angle (A) (0.5774 for 30°, 1.0 for 45°, 1.732 for 60°).



Fixture	Beam Type	Beam Spread	Rated Life	CBCP	0°			30°			30°			45°			60°		
					MH	FC	L W	FC	L W	D	FC	X L W	FC	X L W	D	FC	X L W		
Conix II 16W LED 30K, 80CRI Spot	S	14°	50000	15697	12	109	3.0 3.0	71	4.0 3.5	4	123	6.9 4.2 2.0	347	4.0 2.0 1.4	10	102	5.8 3.4 2.9		
					14	80	3.5 3.5	52	4.7 4.1	5	78	8.7 5.3 2.5	222	5.0 2.5 1.8	11	84	6.4 3.7 3.2		
					16	61	4.0 4.0	40	5.4 4.6	6	55	10.4 6.3 3.0	154	6.0 3.1 2.1	12	71	6.9 4.0 3.5		
					18	48	4.5 4.5	31	6.1 5.2	7	40	12.1 7.4 3.5	113	7.0 3.6 2.5	13	60	7.5 4.4 3.8		
					20	39	5.0 5.0	25	6.7 5.8	8	31	13.9 8.4 4.0	87	8.0 4.1 2.8	14	52	8.1 4.7 4.1		
Conix II 16W LED 30K, 80CRI Narrow Flood	N	26°	50000	7185	7	147	3.2 3.2	95	4.4 3.7	3	100	5.2 6.5 2.7	282	3.0 2.9 1.9	6	130	3.5 3.7 3.2		
					8	112	3.7 3.7	73	5.0 4.2	4	56	6.9 8.7 3.7	159	4.0 3.9 2.6	8	73	4.6 5.0 4.2		
					9	89	4.1 4.1	58	5.6 4.8	5	36	8.7 10.9 4.6	102	5.0 4.8 3.2	10	47	5.8 6.2 5.3		
					10	72	4.6 4.6	47	6.2 5.3	6	25	10.4 13.0 5.5	71	6.0 5.8 3.9	12	32	6.9 7.5 6.3		
					11	59	5.0 5.0	39	6.8 5.8	7	18	12.1 15.2 6.4	52	7.0 6.8 4.5	14	24	8.1 8.7 7.4		
Conix II 16W LED 30K, 80CRI Flood	F	36°	50000	4088	5	164	3.2 3.2	106	4.5 3.8	2	128	3.5 7.6 2.6	361	2.0 2.9 1.8	4	166	2.3 3.6 3.0		
					6	114	3.9 3.9	74	5.4 4.5	3	57	5.2 11.4 3.9	161	3.0 4.4 2.8	5	106	2.9 4.5 3.8		
					7	83	4.5 4.5	54	6.3 5.3	4	32	6.9 15.2 5.2	90	4.0 5.8 3.7	6	74	3.5 5.4 4.5		
					8	64	5.2 5.2	41	7.2 6.0	5	20	8.7 19.0 6.5	58	5.0 7.3 4.6	7	54	4.0 6.3 5.3		
					9	50	5.8 5.8	33	8.1 6.8	6	14	10.4 22.8 7.8	40	6.0 8.7 5.5	8	41	4.6 7.2 6.0		

CRI/CCT Multiplier		
CRI	CCT	Multiplier
80	27K	0.96
	30K	1.00
	35K	1.02
	40K	1.03
90	27K	0.79
	30K	0.83
	35K	0.84
	40K	0.85
97	27K	0.72
	30K	0.75
	40K	0.78