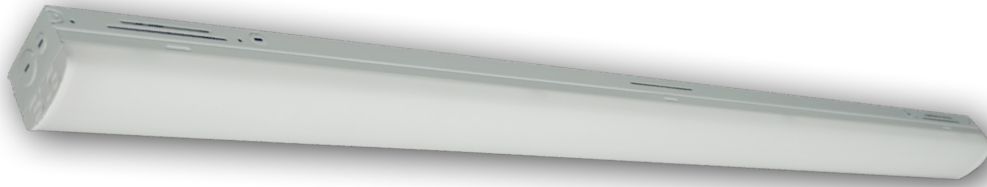
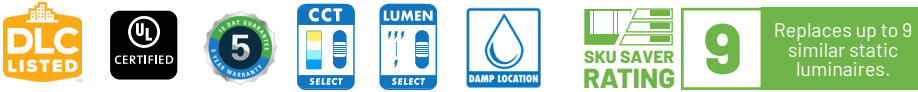


TSS G1

LED Selectable Industrial Strip Gen 1

CONTRACTOR XP

Due to continuous product improvements, specification and/or equipment updates may change without notice.



(Images are shown for illustration purposes only)

TSS G1

The **TSS LED Slim Industrial Strip** is a contractor series LED strip light that offers lumen and CCT selectable options in 4' and 8' sizes. The two-part housing design makes installation 70% faster and reduces accidents/damages. Emergency backup kit and multiple mounting options make the TSS your new "have-you-seen-this" option for strip lighting solutions.

Catalog Number	Description	Lumens	Watts	CCT	Voltage
TSS 2 20/25/30 G1FSK	LED Selectable Slim Industrial Strip, 2 FT, CCT Selectable, White finish	Selectable 1,950 - 3,250 Lm	Selectable 15 - 25 W	Selectable 3500K - 5000K	120V - 277V
TSS 4 30/40/50 G1FSK	LED Selectable Slim Industrial Strip, 4 FT, CCT Selectable, White finish	Selectable 3,120 - 5,200 Lm	Selectable 24 - 40 W	Selectable 3500K - 5000K	120V - 277V
TSS 8 60/80/100 G1FSK	LED Selectable Slim Industrial Strip, 8 FT, CCT Selectable, White finish	Selectable 6,240 - 10,400 Lm	Selectable 48 - 80 W	Selectable 3500K - 5000K	120V - 277V
TSS 8 85 G1 4K	LED Static Slim Industrial Strip, 8 FT, 4000K CCT, White finish	8,450 Lm	85 W	4000K	120V - 277V

ORDERING GUIDE

Example: TSS 4 30/40/50 G1 FSK

Fixture Type	Size	Lumen Output	Generation	Voltage	Selectable CCT*	Finish	Emergency Backup	Accessories
• TSS LED Slim Industrial Strip	• 2ft	• 20/25/30 1,950 Lm / 15 W 2,600 Lm / 20 W 3,250 Lm / 25 W	• G1 First Generation	• BLANK 120-277 V	• FSK 3500K 4000K 5000K	• BLANK White	• BLANK None • EMD DH08D-UNV-055 Emergency Backup pre-installed	<ul style="list-style-type: none"> • BLANK None • MS-ACE-01 Motion sensor • L3 Medium bay lens (max 50ft coverage) • L7 = High bay lens (max 80ft coverage) • TSS-VHOOK 1 set of hooks (2 pcs) • TSC-CHAIN 1.05m chain set • SAC-1810 Strip aircraft cable • TSS-JBCVR J-Box cover and hardware • WG-TSS 4 G1 Wire guard (use 2 for TSS 8) • RC-TSS G1 Row connector
	• 4ft	• 30/40/50 3,120 Lm / 24 W 4,160 Lm / 32 W 5,200 Lm / 40 W						
	• 8ft	• 60/80/100 6,240 Lm / 48 W 8,320 Lm / 64 W 10,400 Lm / 80 W						

*TSS 4 ft and TSS 8ft also available in non-selectable options.

Performance Information

Series Number	Power Level	Lumens	Wattage	CCT
TSS 2 20/25/30 G1 FSK	High	3,250 Lm	25 W	3500K/ 4000K/5000K
	Medium	2,600 Lm	20 W	
	Low	1,950 Lm	15 W	
TSS 4 30/40/50 G1 FSK	High	5,200 Lm	40 W	
	Medium	4,160 Lm	32 W	
	Low	3,120 Lm	24 W	
TSS 8 60/80/100 G1 FSK	High	10,400 Lm	80 W	
	Medium	8,320 Lm	64 W	
	Low	6,240 Lm	48 W	
TSS 8 85 G1 4K		8,450 Lm	65 W	4000K

Specifications

Housing

Aluminum body.

Ambient Temperature

Suitable for use in -20°C to 50°C (-4°F to 122°F).

Mounting

Suspending and surface mounting options.

Lifespan

L70 > 100,000 Hours at 25°C.

Efficacy

Up to 130 lumens per watt.

CCT and CRI

Field selectable: 3500K, 4000K, and 5000K. Non selectable option: 4000K. CRI 80.

Lumen Output

Field selectable: 1950Lm - 3,250Lm (2ft), 3,120 - 5,200 Lm (4ft), 6,240 - 10,400 Lm (8ft).

Non-selectable: 4,550 Lm (4 ft) and 8,450 Lm (8ft).

Warranty

5-year limited warranty. Comprehensive warranty terms can be located on www.slgus.com.

Electrical

Standard 120V - 277V

0-10V dimming standard with a dimming range of 100% to 10%.

Certifications

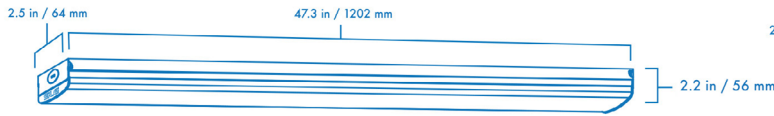
UL Listed. Design Lights Consortium® (DLC) Standard 5.1 qualified product. Rated for Damp Location.

DLC Product ID

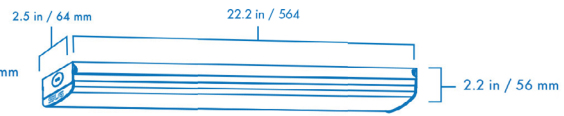
TSS 2 20/25/30 G1 FSK	S-Y7MQ20
TSS 4 30/40/50 G1 FSK	S-0JQCXB
TSS 8 60/80/100 G1 FSK	S-7PDOFQ
TSS-8 85 G1 4K	S-K35V81

Dimensions

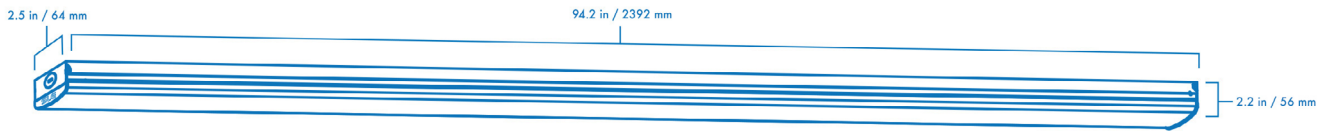
TSS 4 (2.5" x 4')



TSS 2 (2.8" x 2')



TSS 8 (2.5" x 8')



Mounting



TSS-JBCVR



TSC-CHAIN



SAC-1810



TSS-VHOOK



RC-TSS G1



WG-TSS 4 G1

J-Box cover and hardware.

1.05m chain, used with TSS-VHOOK or TSC-VHOOK

Strip aircraft cable.

Set of hooks (2 pcs)

Row connector.

Wire guard.

Emergency Backup



EMD DH08D-UNV-055

Technical Information

Type	Rated	Battery	Emergency power	Duration
EMD-DH08D-UNV-055	Input: 100-277V~, 50-60Hz, 50mA, 4W, P.F.>0.5 Output: DC20-55V, 8W Constant power Surge: 1KV(L-N) 2KV(L/N-PE)	Li-ion 7.4V 2.6Ah	8W (7.0-8.2)	90 minutes

Luminaire Maintenance

Product Number	Ambient Temperature	L70
TSS Series	25°C (77°F)	>100,000 Hours

Electrical Load

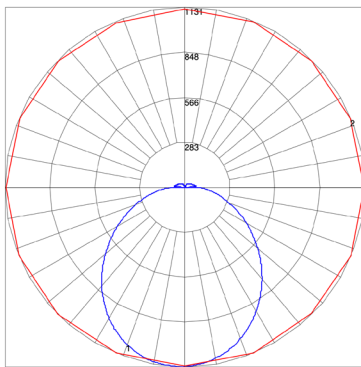
TSS Selectable Lumen/Watt

Watt	Current (A)			
	120V	208V	240V	277V
15W	0.125	0.07	0.06	0.05
20W	0.17	0.09	0.08	0.07
25W	0.21	0.12	0.10	0.09
24W	0.20	0.12	0.10	0.09
32W	0.27	0.15	0.13	0.12
40W	0.33	0.19	0.16	0.14
48W	0.40	0.23	0.20	0.17
64W	0.53	0.31	0.27	0.23
80W	0.67	0.38	0.34	0.29

TSS 4 and TSS 8 Static Lumen/Watt

Watt	Current (A)			
	120V	208V	240V	277V
35W	0.29	0.17	0.15	0.13
65W	0.54	0.31	0.27	0.23

Photometrics

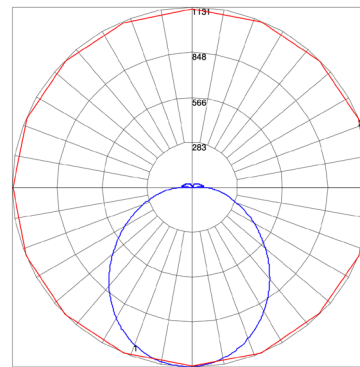


Maximum Candela = 1131 Located At Horizontal Angle = 225, Vertical Angle = 2.5
 # 1 - Vertical Plane Through Horizontal Angles (225 - 45) (Through Max. Cd.)
 # 2 - Horizontal Cone Through Vertical Angle (2.5) (Through Max. Cd.)

TSS 4 30/40/50 G1 FSK
 Lumen setting (30 - 3120 LM)
 CCT setting 3500K Wattage (24W)

ZONAL LUMEN SUMMARY

ZONE	LUMENS	%LAMP	%FIXT
0-20	410.37	11.90	11.90
0-30	865.47	25.20	25.10
0-40	1403.46	40.80	40.80
0-60	2439.05	70.90	70.90
0-80	3092.66	89.90	89.90
0-90	3226.03	93.70	93.70
10-90	3119.46	90.70	90.60
20-40	993.09	28.90	28.90
20-50	1539.03	44.70	44.70
40-70	1424.36	41.40	41.40
60-80	653.62	19.00	19.00
70-80	264.85	7.70	7.70
80-90	133.36	3.90	.90
90-110	101.97	3.00	3.00
90-120	143.03	4.20	4.20
90-130	174.36	5.10	5.10
90-150	208.44	6.10	6.10
90-180	215.61	6.30	6.30
110-180	113.65	3.30	3.30
0-180	3441.64	100.00	100.00



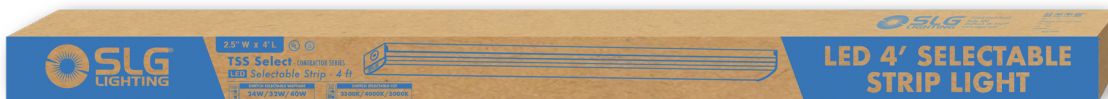
Maximum Candela = 1131 Located At Horizontal Angle = 225, Vertical Angle = 2.5
 # 1 - Vertical Plane Through Horizontal Angles (225 - 45) (Through Max. Cd.)
 # 2 - Horizontal Cone Through Vertical Angle (2.5) (Through Max. Cd.)

TSS 4 30/40/50 G1 FSK
 Lumen setting (30 - 3120 LM)
 CCT setting 3500K Wattage (24W)

ZONAL LUMEN SUMMARY

ZONE	LUMENS	%LAMP	%FIXT
0-20	410.37	11.90	11.90
0-30	865.47	25.20	25.10
0-40	1403.46	40.80	40.80
0-60	2439.05	70.90	70.90
0-80	3092.66	89.90	89.90
0-90	3226.03	93.70	93.70
10-90	3119.46	90.70	90.60
20-40	993.09	28.90	28.90
20-50	1539.03	44.70	44.70
40-70	1424.36	41.40	41.40
60-80	653.62	19.00	19.00
70-80	264.85	7.70	7.70
80-90	133.36	3.90	.90
90-110	101.97	3.00	3.00
90-120	143.03	4.20	4.20
90-130	174.36	5.10	5.10
90-150	208.44	6.10	6.10
90-180	215.61	6.30	6.30
110-180	113.65	3.30	3.30
0-180	3441.64	100.00	100.00

Shipping Information



*Box render is for example purposes only.

Product number	Individual box size	Individual box weight	# per carton	Carton box size	Carton box weight
TSS 2	24" x 3" x 2.8"	-	6	22.7" x 2.6" x 3"	-
TSS 4	48" x 3" x 2.5"	4.3 lbs	9	48.5" x 9" x 8"	40.57 lbs
TSS 8	95" x 3" x 2.5"	8.49 lbs	4	96" x 6.5" x 5.5"	36.38 lbs