



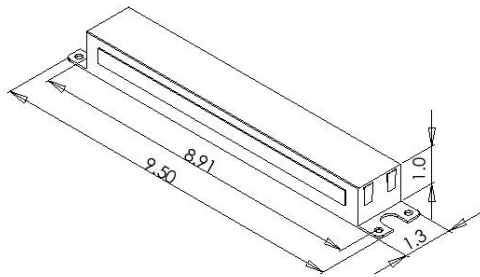
<b>Model No.</b>	<b>VE232MVHRPE</b>
Family	Elite
Ballast Type	Electronic
Lamp Operation	Serial
Input Voltage	120/277V
Starting Method	Program Start

## PRODUCT SPECIFICATION

## ELECTRONIC BALLASTS

Lamp Type	No. of Lamps	Input Voltage (V)	Input Current (A)	Input Power (W)	Power Factor	MAX THD (%)	Ballast Factor	Min. Starting Temp.(F/C)	Lamp Current Crest Factor	B.E.F.
FB31T8 31W	2	120/277	0.46/0.20	55/54	0.98/0.97	10	0.88	0	1.7	1.62/1.66
F32T8 32W	2	120/277	0.48/0.21	57/56	0.98	10	0.88	0	1.7	1.54/1.56
FB32T8 32W	2	120/277	0.48/0.21	57/56	0.98/0.97	10	0.88	0	1.7	1.54/1.56
FB28T8 28W	2	120/277	0.44/0.19	52/51	0.98/0.97	10	0.90	0	1.7	1.73/1.76
F32T8/ES/30 30W	2	120/277	0.45/0.20	54/53	0.98/0.97	10	0.90	0	1.7	1.67/1.70
F32T8/ES/25 25W	2	120/277	0.42/0.19	50/49	0.98/0.97	10	0.98	0	1.7	2.00/2.04
F32T8/ES 28W	2	120/277	0.44/0.19	52/51	0.98/0.97	10	0.90	0	1.7	1.73/1.76
F17T8 17W	1	120/277	0.14/0.07	17	0.98	10	0.97	0	1.7	
F17T8 17W	2	120/277	0.24/0.11	29	0.98	10	0.90	0	1.7	
F17T8 17W	1	120/277	0.19/0.09	23	0.98	10	0.90	0	1.7	
F25T8 25W	2	120/277	0.36/0.16	43	0.98	10	0.89	0	1.7	
F32T8/ES 25W	1	120/277	0.21/0.09	26	0.98	10	0.90	0	1.7	
F32T8/ES 25W	1	120/277	0.42/0.18	50/49	0.98	10	0.98	0	1.7	
F32T8/ES 28W	1	120/277	0.22/0.10	29	0.98	10	0.90	0	1.7	
F32T8/ES 28W	1	120/277	0.44/0.19	52/51	0.98	10	0.90	0	1.7	
F32T8/ES 30W	1	120/277	0.23/0.11	31	0.98	10	0.92	0	1.7	
F32T8/ES 30W	1	120/277	0.45/0.20	54/53	0.98	10	0.90	0	1.7	
F32T8 32W	1	120/277	0.24/0.11	32	0.98	10	0.90	0	1.7	
F40T8 40W	1	120/277	0.31/0.13	37	0.98	10	0.92	0	1.7	

## Physical Parameters



Enclosure (in)	
Length	9.5
Width	1.3
Height	1.0
Mounting	8.91

Lead Length	in.(+/-1.0)
Black	12
White	12
Red	36
Blue	24
Yellow	N/A

### Wiring Diagram

