



SPECIFICATION SHEET : WH7-230

This Is An Original Product From Fulham Co., Inc

Description : WorkHorse Series Versatile, Solid State Electronic Ballast. Small Case Size, High Power Factor, Light Weight, Available In 120/230/277V 50/60 Hz.

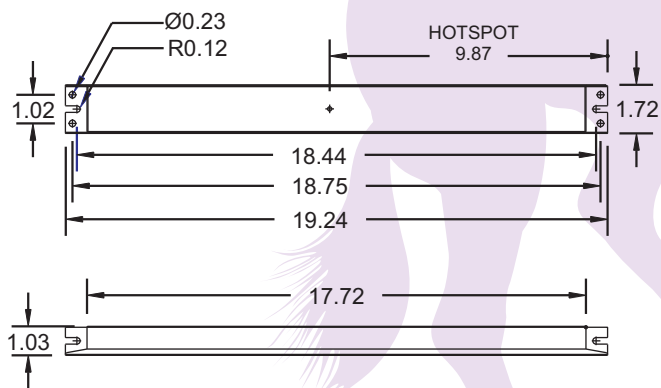
This Ballast Will Operate Following Lamps.

REFER TO LAMP LISTING

ELECTRICAL DATA

INPUT VOLT: 230V ± 10%, 50/60Hz					
LAMP WATTS/TYPE	LAMPS OPERATED	INPUT WATTS	LINE CURRENT	BALLAST FACTOR	EFFICACY FACTOR
F60T12HO	1	78	0.37	0.89	1.14
CFT96W	1	103	0.47	0.87	0.84
CFT96W	2	213	0.96	1.02	0.48
F54T5HO	4	197	0.89	0.82	0.42
POWER FACTOR			> 0.9		
THD			< 35%		
CURRENT CREST FACTOR			< 2.6		
EMI/RFI COMPLIANCE			FCC PART 18-A		
SOUND RATING			" A "		
BALLAST TYPE			INSTANT START		
VOLTAGE TRANSIENTS			ANSI C82.11 - 1993		
INPUT/PROTECTION			FUSE		
OUTPUT/PROTECTION			-		
MIN. OPERATING TEMP			- 30 °C (- 20 ° F)		
MAX. CASE TEMP			70 °C (158 ° F)		
ENERGY STAR 4.0			-		
APPROVALS/CLASS			UL /cUL LISTED, CLASS " P ", 1 OR 2 OUTDOOR		

MECHANICAL DATA



Where : L = Length, W = Width, H = Height

WIRING DIAGRAMS

WIRE	BLACK	WHITE	RED	BLUE	YELLOW	BROWN
LENGTH - INCHES	$12 \pm 1"$	$12 \pm 1"$	$36 \pm 1"$	-	$36 \pm 1"$	-

FOR WIRING DIAGRAM,
PLEASE REFER TO FULHAM'S CATALOG

NOTE : This Ballast Must Be Grounded

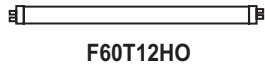


SPECIFICATION SHEET : WH7-230

This Is An Original Product From Fulham Co., Inc

Description : WorkHorse Series Versatile, Solid State Electronic Ballast. Small Case Size, High Power Factor, Light Weight, Available In 120/230/277V 50/60 Hz.

This Ballast Will Operate Following Lamps.

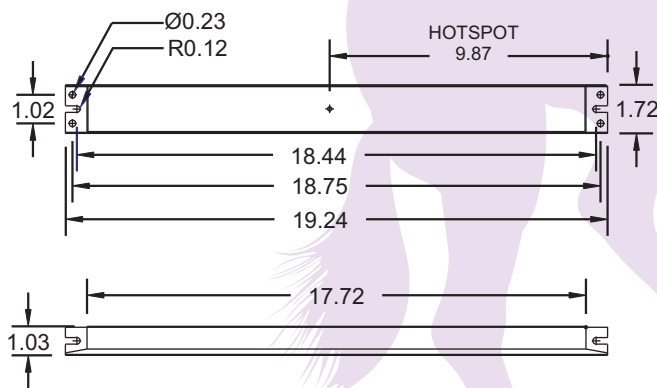


ELECTRICAL DATA

INPUT VOLT: 230V ± 10%, 50/60Hz

LAMP WATTS/TYPE	LAMPS OPERATED	INPUT WATTS	LINE CURRENT	BALLAST FACTOR	EFFICACY FACTOR
MaxLight 25W CE 0.3	4	100	0.47	0.82	0.82
LightTech 10/100 R	2	202	0.93	0.88	0.43
LightTech 20/120 R	1	127	0.59	0.88	0.70
LightTech 20/120 R	2	203	0.93	0.76	0.37
LightTech 33/160 R	1	133	0.61	0.69	0.52
LightTech 26/180 R	1	199	0.91	0.96	0.48
POWER FACTOR	> 0.9				
THD	< 37%				
EMI/RFI COMPLIANCE	FCC PART 18-A				
SOUND RATING	" A "				
BALLAST TYPE	INSTANT START				
VOLTAGE TRANSIENTS	ANSI C82.11 - 1993				
INPUT/PROTECTION	FUUSE				
OUTPUT/PROTECTION	-				
MIN. OPERATING TEMP	- 30 °C (- 20 ° F)				
MAX. CASE TEMP	70 °C (158 ° F)				
ENERGY STAR 4.0	-				

MECHANICAL DATA



WIRING DIAGRAMS

WIRE	BLACK	WHITE	RED	BLUE	YELLOW	BROWN
LENGTH - INCHES	12 ± 1"	12 ± 1"	36 ± 1"	-	36 ± 1"	-

FOR WIRING DIAGRAM,
PLEASE REFER TO FULHAM'S CATALOG

NOTE : This Ballast Must Be Grounded