

WME

LED Emergency Wall Pack

Due to continuous product improvements, specification and/or equipment updates may change without notice.



(Images are shown for illustration purposes only)

WME Emergency Wall Pack

The **WME** has your outdoor emergency lighting covered as a cold-location egress wall pack that reduces night sky pollution with a cutoff distribution. Put your maintenance at ease as the WME features self-testing / self-diagnostics for continuous performance. The selectable CCT output give you a SKU reducer with options and is your go to source for emergency wall pack lighting. We've got you covered.

Catalog Number	Description	Lumens	Watts	CCT	Voltage
WME 12 G1 FSK	WME Emergency Wall Pack, 15 Watt, 3 Selectable CCT, 80° Distribution	1250 Lm (Standard) 400 Lm (Emergency)	11 W Standby, 16 W Max	Selectable 3000K - 5000K	120V - 277V

ORDERING GUIDE

Example: **WME 12 G1 FSK**

Fixture Type	Selectable Lumen Output	Generation	Voltage	Selectable CCT	Finish
• WME Emergency Wall Pack	• 12 1,250 Lm / 11 W (Standard) 400 Lm (Emergency)	• G1 First Generation	• BLANK 120-277 V	• FSK 3000K 4000K 5000K	• BLANK Dark Bronze

Specifications

Housing

UV treated die-cast casing for outdoor applications.

Ambient Temperature

Suitable for use in -30°C to 50°C (-22°F to 122°F).

Mounting

Wall mount.

Efficacy

Up to 114 lumens per watt.

CCT and CRI

Field selectable: 3000K, 4000K, and 5000K.
CRI 80.

Lumen Output

Standard: 1250 Lm.

Emergency Mode: 400 Lm.

Wattage

Standby 11 W, 16 W Max at battery charge & heater operation.

Warranty

3-year limited warranty. Comprehensive warranty terms can be located on www.slgus.com.

Electrical

Standard 120V - 277V.

Battery

6.4V 1500mAh 18650type LiFePO4 battery.

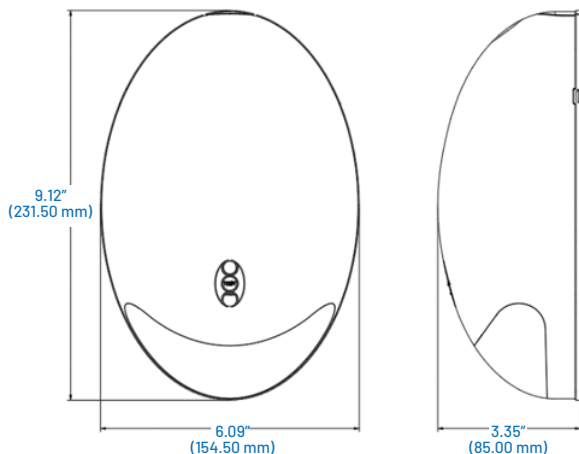
24 hours charge, 90 minute discharge.

Certifications

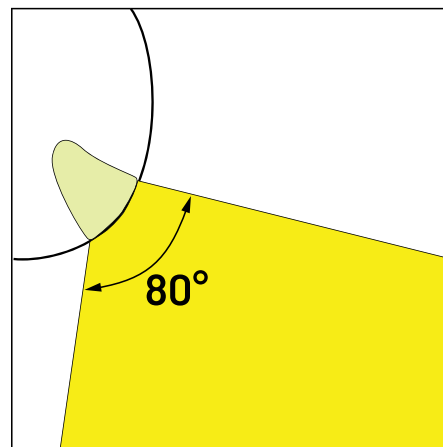
UL Listed for cold locations. FCC compliant. IP65 Rated. IK10 Rated.

Dimensions

WME



Distribution

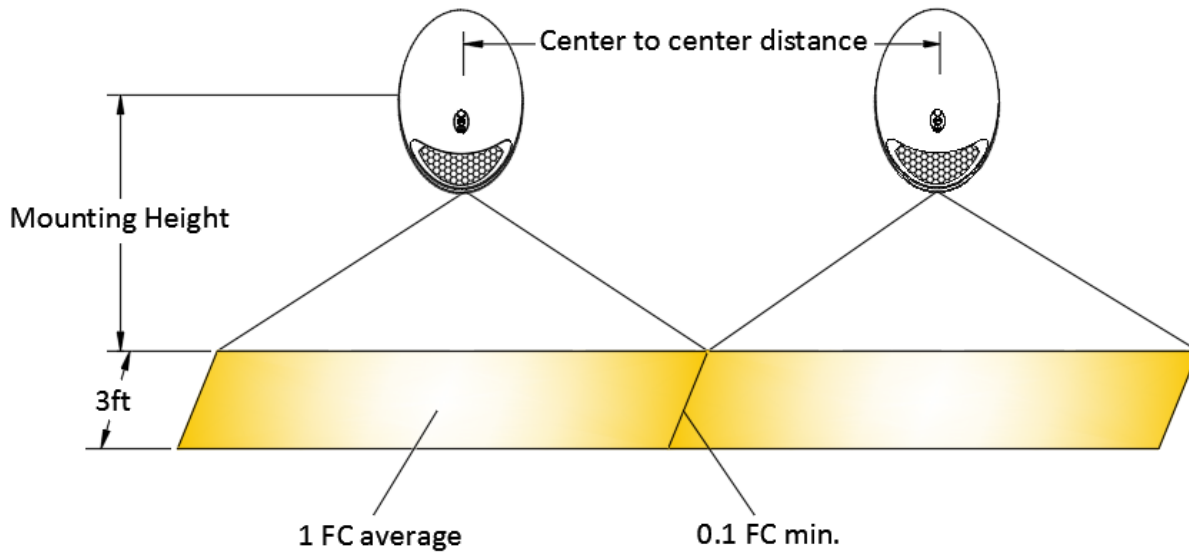
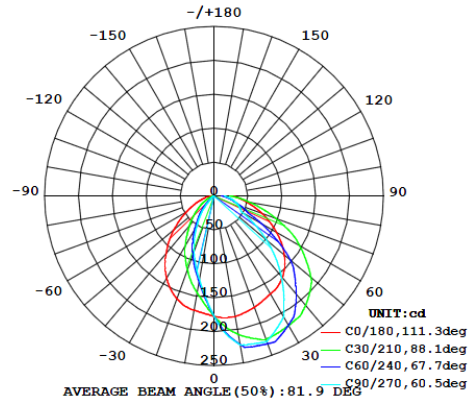


Photometric (Emergency Mode)

WME

Luminous flux (Luminaire): 417 lm
 Luminous flux (Lamps): 417 lm
 Luminaire Wattage: 0.0 W
 Luminaire classification according to CIE:
 100
 CIE flux code: 54 82 95 100 100
 Fitting: 1 x **WME G1** (Correction
 Factor 1.000).

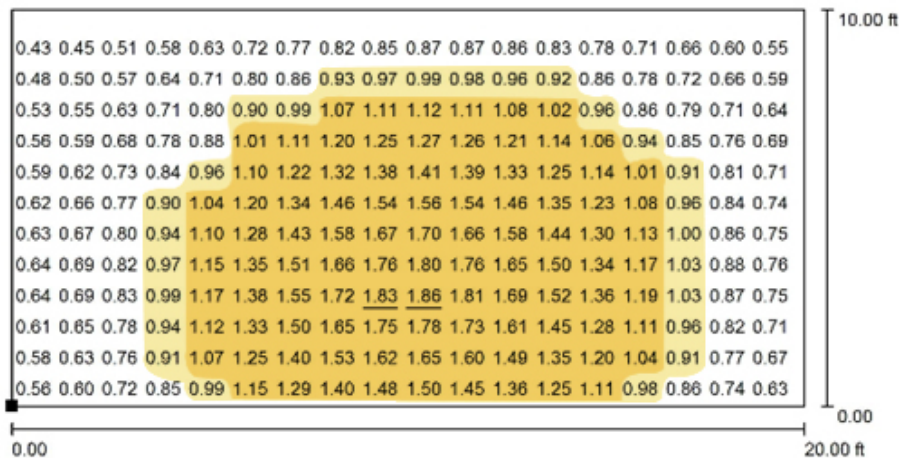
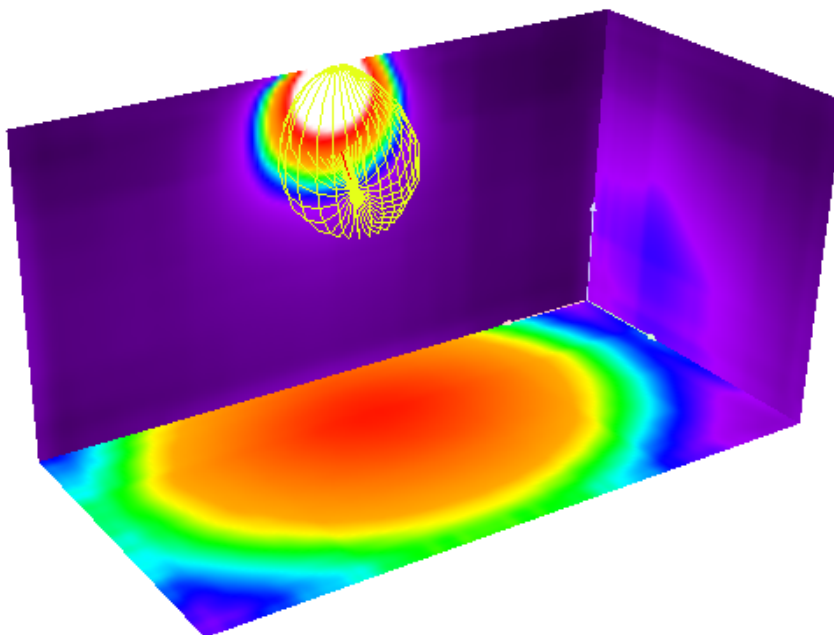
See our luminaire catalog for an image of the luminaire.



NFPA 101 requires 1.0 foot-candle average and 0.1 foot-candle minimum with a 40:1 maximum/minimum ratio. The corridor used is 80 feet long, 9 feet ceiling with a 6 feet wide walkway and 6&3 feet path of egress. The reflectance are 80% ceiling, 50% walls and 20% floors. The fixture mounting height is 7.5 feet.

Model (Emergency Mode)	7.5ft Mount Height	10ft Mount Height
	WME G1 (400 Lm)	6ft Wide corridor 6ft Wide path 45ft spacing

Photometric (Emergency Mode) (Continued)



Values in Footcandles, Scale 1 : 44

Not all calculated values could be displayed.

Position of surface in room:
Marked point: (0.000 ft, 0.000 ft, 0.000 ft)



Grid: 128 x 64 Points

E_{av} [fc]
1.02

E_{min} [fc]
0.39

E_{max} [fc]
1.87

u0
0.386

E_{min} / E_{max}
0.211